



Above & Beyond

FUNDRAISING AND DEVELOPMENT 2015-2016

German International School Portland

FUNDRAISING AND DEVELOPMENT

Above and Beyond: 2015-16 Fundraising Impact

Adrienne Boxer, Development Director

Fundraising at the German International School (GIS) enriches the physical, social, and intellectual growth of every GIS student every day. In 2015-16, GIS supporters contributed to the success of the school in two very important ways:

Special Appeal Donations Bring Down the House and More

For years, we all dreamed of tearing down the dilapidated house next to our school and create more space for our children to run and play. As a community, we finally made that happen. To fully maximize the school's recent investment in the adjacent property, families donated nearly \$31,000 to transform and enhance the former eyesore into a vibrant greenspace for our children. Funds raised covered the costs of demolition, landscaping, irrigation and fencing to prepare the space for a new soccer field, goals, an outdoor track and special sporting equipment that will be ready for the coming school year. What a transformation! Vielen Dank!

Crucial Contributions and General Fund Support

We are very grateful for any donation that improves our school and furthers our mission. Contributions allow the school to make costly physical repairs and improvements, close the gap between income and expenses and to strategically invest in the school's future. During 2015-16, GIS families and friends also contributed \$99,000 toward the general budget through the annual campaign, fundraising events and special gifts. These funds allowed the school to cover operating expenses like salaries and educational materials. Additionally, this support enabled the school to make investments in long-term improvements. For example, we were able to install new carpeting, paint classrooms; widen the entranceway into the lunch room, relocate new drinking fountains, and make necessary roofing and siding repairs. We were also able purchase a new sound system for the music program and special events. Additional contributions allowed us to purchase new Chromebooks for each classroom to improve technology access for our students. Equally important is the investment we were able to make in our teachers through salary



Fundraising contributions helped with:

Campus Expansion

- Demolition
- Landscaping
- Irrigation
- Fencing
- Soccer Goals
- Outdoor Track
- New Sporting equipment

Long Term Building Improvements

- New carpeting
- Fresh paint in classrooms
- Widened hallway
- Relocated drinking fountains
- Roofing & Siding Repairs

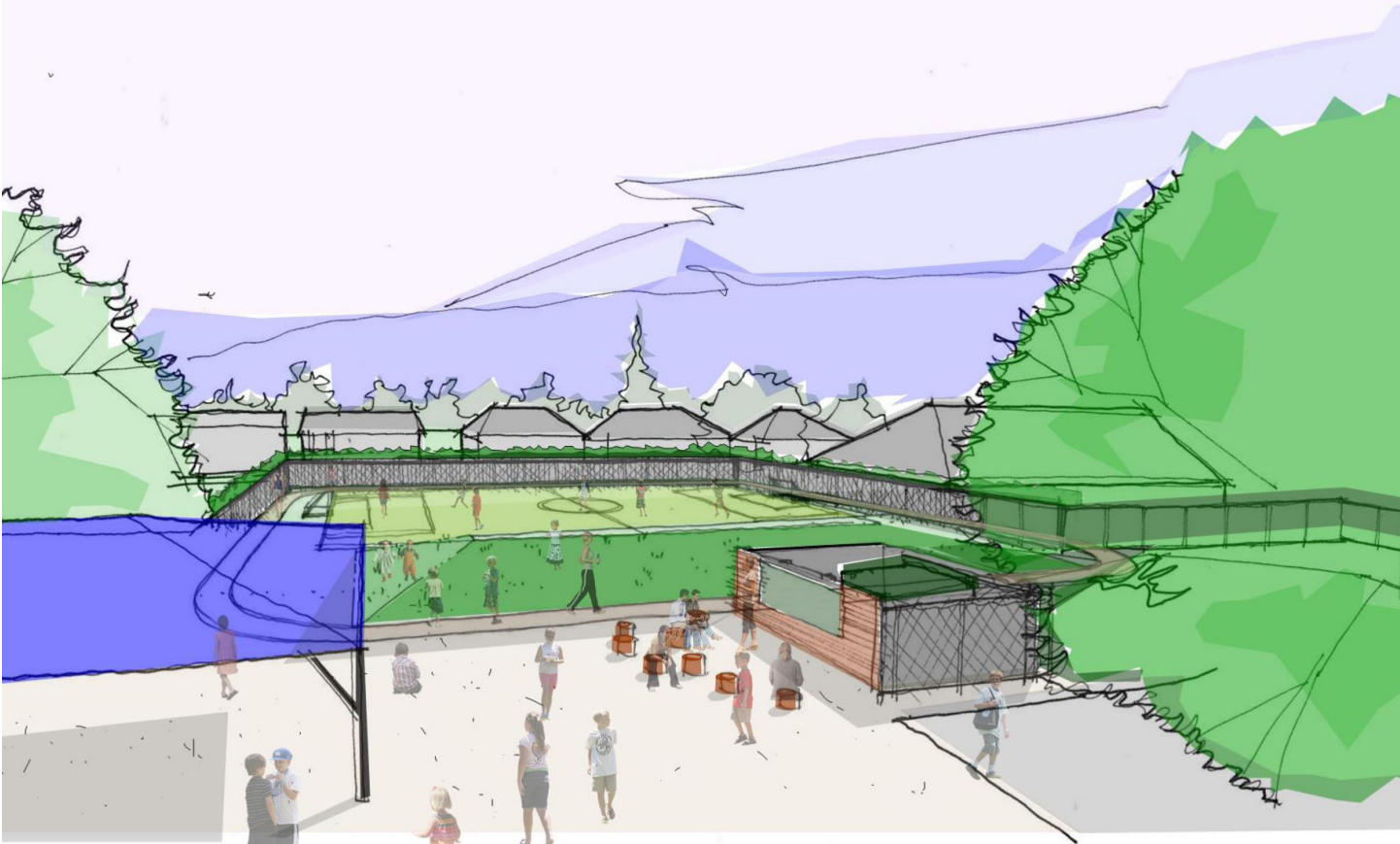
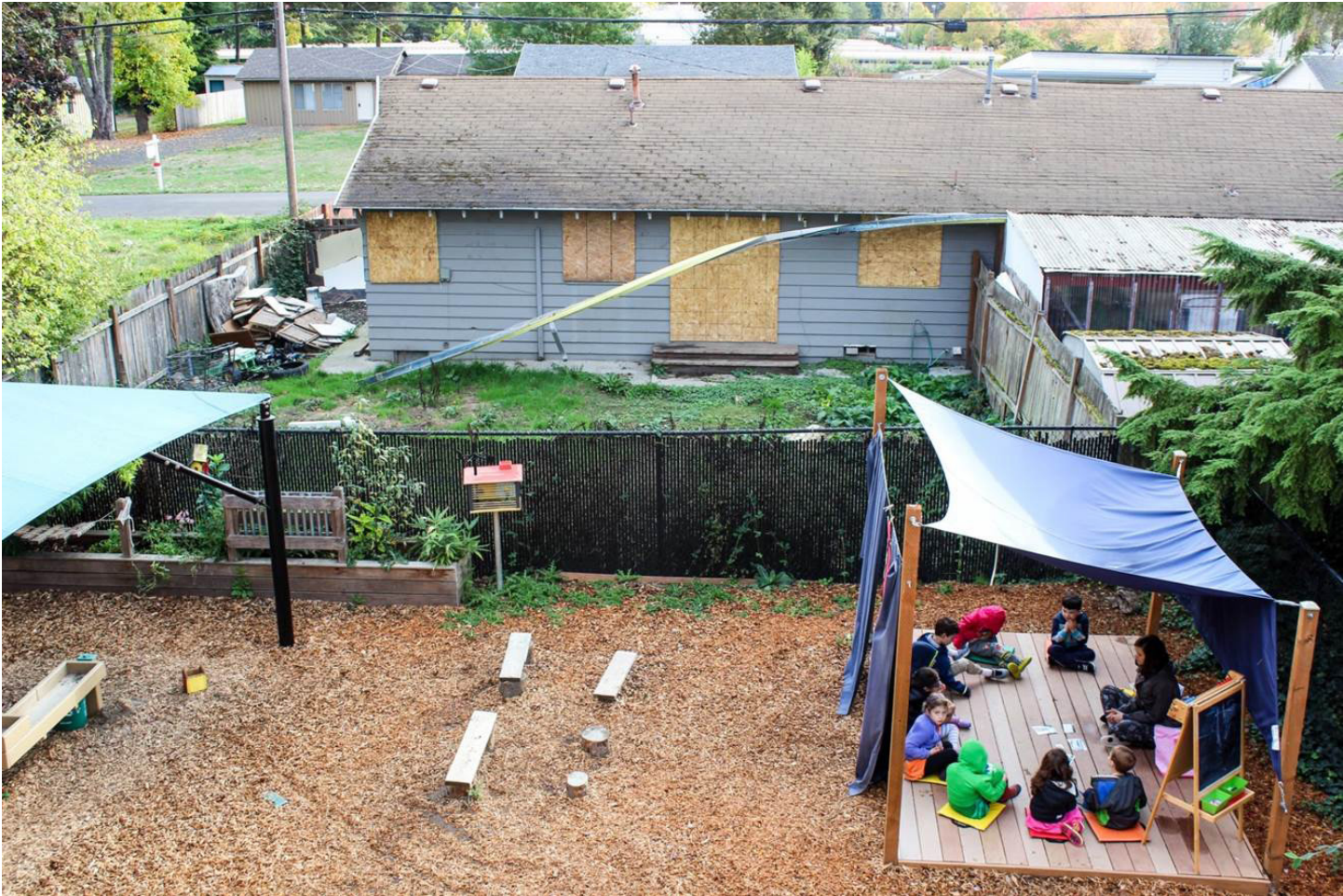
Educational Improvements

- New sound system
- Chromebooks for classrooms
- Salary increases for teachers
- Professional Development for teachers

increases and professional development.

We are very proud of, and grateful for, the generous investment of fundraising dollars from our extended GIS community to make these important improvements to our school. With your support we are continuing to provide the highest level of education and learning environment for our children. ■







**German
International
School
Portland**

EXÜBERANCE IN LEARNING.

www.gspdx.org